



Key to Symbol Numbers

Boater Services and Accommodations

- B1-Construct marina facilities for additional boaters
- B2- Utilize containment area along dam for mooring facilities
- B3- Expand docking facilities at Henley Park
- B4- Install restroom and shower facilities at Bridge House
- B5- Upgrade water and electric service at docks
- B6- Provide WiFi access along canal
- B7- Install floating docks and fishing pier for recreation
- B8- Install canoe and kayak launch

Community Restoration

- CR1-Improve or remove fencing along waterfront near State St
- CR2- Install lighting to increase security and extend visitor hours
- CR3- Install awnings or shutters on State Street buildings
- CR5- Repair sidewalks and repaint crosswalks
- CR6- Plant trees and vegetation to enhance visual environment
- CR7- Bury power lines
- CR8- Convert State St parking to parallel parking and install median

Community Development

- D1- Convert buildings into multi-use structures
- D2- Infill vacant lots along State St with mixed use buildings
- D3- Investigate the use of draw bridge for pedestrian traffic
- D4- Construct pedestrian bridge from Lock Island to west Phoenix
- D5- Create village square with large clock and reflection pool
- D6- Install informative kiosk near canal for visitors

Marketing and Community Involvement

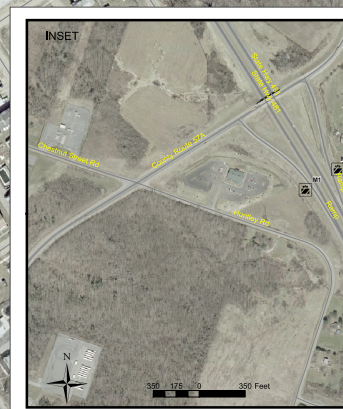
- M1- Install welcoming signage along I-481 (see inset)
- M2- Install welcoming signage along canal
- M3- Form a "Business Development Committee"
- M7- Coordinate marketing with Rt. 57 businesses
- M8- Work with regional tourism groups to promote canal
- M10- Organize farmer's market to be held weekly
- M11- Create festivals supporting cultural heritage of Village

Policy and Management

- P1- Create a committee to organize festivals and events
- P2- Connect individual public open spaces with trails
- P3- Pursue land acquisitions for continuity for access to canal
- P5- Amend zoning for residential use in commercial district
- P6- Participate in NYS Coastal Resources Interpretive Program

Recreational Opportunities

- R1- Create trail network for walking and biking
- R2- Install stationary telescope for bird watching
- R3- Install interpretive signs
- R4- Renovate gazebo for year round activities
- R5- Create nature/historical/cultural center on Lock Island
- R6- Develop an exercise course on Lock Island
- R7- Renovate existing recreational facilities along waterfront
- R8- Develop a walking tour linking residential with waterfront
- R9- Install bike racks to promote non-motorized travel



Central New York Regional Planning
and Development Board
126 North Salina Street
100 Clinton Square, Suite 200
Syracuse, NY 13202
Phone: (315) 422-8276
Fax: (315) 422-9051
www.cnyrpd.org
April 2007

Summary of Projects

Strategic Plan for the Canal Waterfront District Village of Phoenix, Oswego County, New York

This map was created for planning purposes only. CNY RPDB does not guarantee the accuracy or completeness of this map.

Legend

- Type**
- Boater Services
 - Community Development
 - Community Restoration
 - Marketing
 - Policy and Management
 - Recreational Opportunities



0 100 200 400 Feet